

Specifications (US unit)



JUNCS

13-1, Geumo-ro 794beon-gil, Gwangmyeong-si, Gyeonggi-do, 14297, Korea
www.juncs.co.kr www.attachment.kr

Crusher

MP series, Hydraulic Rotating

Sheet 1/2

- Optimization of weight, crushing force, and opening width
- High strength and wear resistance materials for reliability
- Speed-up valve for fast work
- Versatility work with 4 options (crushing / shearing / pulverizing / multi)

Description		units	MP050H-C	MP100H-C	MP150H-C	MP200H-C	MP250H-C
Weight		lb	1,340	1,980	2,730	3,770	4,540
Max Opening Width	A	in	26.0	31.9	35.4	37.4	42.1
Overall Width	B	in	39.4	46.1	49.8	51.0	56.9
Overall Length	C	in	53.5	69.7	68.7 (76.2)	73.6 (83.7)	76.2 (85)
Overall Height	D	in	18.3	22.0	23.2	27.4	27.4
Body Width	E	in			13.4	16.3	17.7
Crushing Force	F	US ton	31 (@ 3,500 psi)	45 (@ 4,800 psi)	54 (@ 4,800 psi)	67 (@ 4,800 psi)	89 (@ 4,800 psi)
	G	US ton	48 (@ 3,500 psi)	76 (@ 4,800 psi)	96 (@ 4,800 psi)	108 (@ 4,800 psi)	144 (@ 4,800 psi)
Cutting Force	H	US ton	117 (@ 3,500 psi)	191 (@ 4,800 psi)	244 (@ 4,800 psi)	247 (@ 4,800 psi)	324 (@ 4,800 psi)
Cutter Length	K	in	5.9	6.7	6.7	6.7	6.7
Allowable Max. System Pressure		psi	4,400	4,800	5,500	5,500	5,500
Swing Motor Setting Pressure		psi	1,200	1,200	3,000	3,000	3,000
Recommended Oil Flow	Cylinder	gpm	13.2 ~ 23.8	15.9 ~ 29.1	39.6 ~ 66.0	29.1 ~ 66.0	39.6 ~ 66.0
	S / Motor	gpm	2.6 ~ 4.0	2.6 ~ 4.0	9.5 ~ 10.6	9.5 ~ 10.6	9.5 ~ 10.6
Speed-up Valve		-	Standard	Standard	Standard	Standard	Standard
Rotating		-	Hydraulic	Hydraulic	Hydraulic	Hydraulic	Hydraulic
Recommended Carrier Weight		lb	9,900~17,600	15,400~26,500	26,500~39,700	35,300~52,900	37,500~61,700
Optional Jaw Types		-	C, S	C, S	C, S, P, M	C, P, M	C, S, P, M
Cylinder Bore Diameter		in	Ø6.5	Ø7.1	Ø7.9	Ø8.3	Ø9.4

- Above specifications are subject to change without prior notice.
- Dimensions in () are for pin on type mounting configuration.



Option Jaw



Crusher (C)



Shear (S)



Pulverizer (P)



Mult (M)

Crusher

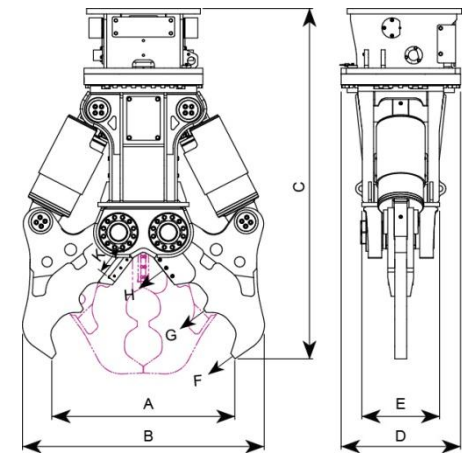
MP series, Hydraulic Rotating

Sheet 2/2

- Optimization of weight, crushing force, and opening width
- High strength and wear resistance materials for reliability
- Speed-up valve for fast work
- Versatility work with 4 options (crushing / shearing / pulverizing / multi)

Description		units	MP300H-C	MP350H-C
Weight		lb	6,500	7,720
Max Opening Width	A	in	45.3	51.2
Overall Width	B	in	62.6	69.9
Overall Length	C	in	85 (95.9)	88.2 (99)
Overall Height	D	in	31.9	31.9
Body Width	E	in	18.7	21.3
Crushing Force	F	US ton	110 (@ 4,800 psi)	115 (@ 4,800 psi)
	G	US ton	192 (@ 4,800 psi)	191 (@ 4,800 psi)
Cutting Force	H	US ton	463 (@ 4,800 psi)	488 (@ 4,800 psi)
Cutter Length	K	in	7.9	7.9
Allowable Max. System Pressure		psi	5,500	5,500
Swing Motor Setting Pressure		psi	3,000	3,000
Recommended Oil Flow	Cylinder	gpm	66.0 ~ 92.5	66.0 ~ 92.5
	S / Motor	gpm	9.5 ~ 10.6	9.5 ~ 10.6
Speed-up Valve		-	Standard	Standard
Rotating		-	Hydraulic	Hydraulic
Recommended Carrier Weight		lb	57,300 ~ 83,800	66,100 ~ 99,200
Optional Jaw Types		-	C, S, P, M	C, S, P, M
Cylinder Bore Diameter		in	Ø10.6	Ø11.4

- Above specifications are subject to change without prior notice.
- Dimensions in () are for pin on type mounting configuration.



Crusher

MP series, Free Rotating

Sheet 1/2

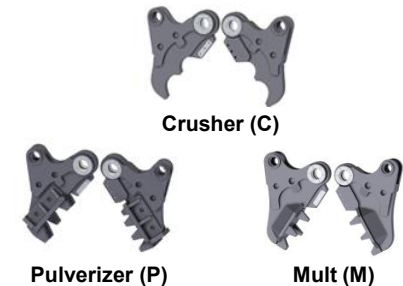
- Optimization of weight, crushing force, and opening width
- High strength and wear resistance materials for reliability
- Speed-up valve for fast work
- Versatility work with 3 options (crushing / pulverizing / multi)

Description		units	MP030R	MP050R-C	MP100R-C	MP150R-C	MP200R-C
Weight		lb	790	1,300	1,850	2,560	3,680
Max Opening Width	A	in	19.3	26.0	31.9	35.4	37.4
Overall Width	B	in	30.7	39.4	46.1	49.8	51.0
Overall Length	C	in	44.9	53.5	69.7	68.7 (76.2)	73.6 (83.7)
Overall Height	D	in	13.8	18.3	22.0	23.2	27.4
Body Width	E	in				13.4	16.3
Crushing Force	F	US ton	20 (@ 3,000 psi)	31 (@ 3,500 psi)	45 (@ 4,800 psi)	54 (@ 4,800 psi)	67 (@ 4,800 psi)
	G	US ton	32 (@ 3,000 psi)	48 (@ 3,500 psi)	76 (@ 4,800 psi)	96 (@ 4,800 psi)	108 (@ 4,800 psi)
Cutting Force	H	US ton	76 (@ 3,000 psi)	117 (@ 3,500 psi)	196 (@ 4,800 psi)	244 (@ 4,800 psi)	247 (@ 4,800 psi)
Cutter Length	K	in	3.9	5.9	6.7	6.7	6.7
Allowable Max. System Pressure		psi	4,100	4,400	4,800	5,100	5,500
Swing Motor Setting Pressure		psi	-	-	-	-	-
Recommended Oil Flow	Cylinder	gpm	7.9 ~ 19.8	13.2 ~ 23.8	15.9 ~ 29.1	21.1 ~ 47.6	29.1 ~ 66.0
	S / Motor	gpm	-	-	-	-	-
Speed-up Valve		-	Standard	Standard	Standard	Standard	Standard
Rotating		-	Free	Free	Free	Free	Free
Recommended Carrier Weight		lb	5,500~11,000	9,900~17,600	15,400~26,500	26,500~39,700	35,300~52,900
Optional Jaw Types		-	C	C	C	C, P, M	C, P, M
Cylinder Bore Diameter		in	Ø5.9	Ø6.5	Ø7.1	Ø7.9	Ø8.3

- Above specifications are subject to change without prior notice.
- Dimensions in () are for pin on type mounting configuration.



Option Jaw



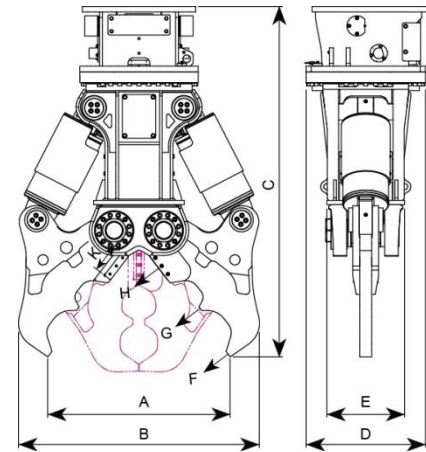
Crusher

MP series, Free Rotating

Sheet 2/2

- Optimization of weight, crushing force, and opening width
- High strength and wear resistance materials for reliability
- Speed-up valve for fast work
- Versatility work with 3 options (crushing / pulverizing / multi)

Description		units	MP250R-C	MP300R-C	MP350R-C	MP800R-C	MP1000R-C
Weight		lb	4,520	6,790	7,720	16,530	20,940
Max Opening Width	A	in	42.1	45.3	51.2	63.0	78.7
Overall Width	B	in	56.9	63.4	69.9	82.7	106.3
Overall Length	C	in	76.2 (85)	86.6 (97.4)	88.2 (99)	126	145.7
Overall Height	D	in	27.4	31.9	31.9	34.6	37.4
Body Width	E	in	17.7	21.3	21.3	25.6	29.5
Crushing Force	F	US ton	89 (@ 4,800 psi)	99 (@ 4,800 psi)	115 (@ 4,800 psi)	202 (@ 4,800 psi)	303 (@ 4,800 psi)
	G	US ton	144 (@ 4,800 psi)	157 (@ 4,800 psi)	191 (@ 4,800 psi)	371 (@ 4,800 psi)	541 (@ 4,800 psi)
Cutting Force	H	US ton	324 (@ 4,800 psi)	363 (@ 4,800 psi)	488 (@ 4,800 psi)	978 (@ 4,800 psi)	1,457 (@ 4,800 psi)
Cutter Length	K	in	6.7	7.9	7.9	11.8	11.8
Allowable Max. System Pressure		psi	5,500	5,500	5,500	5,500	5,500
Swing Motor Setting Pressure		psi	-	-	-	-	-
Recommended Oil Flow	Cylinder	gpm	39.6 ~ 66.0	66.0 ~ 92.5	66.0 ~ 92.5	79.3 ~ 158.5	132.1 ~ 211.3
	S / Motor	gpm	-	-	-	-	-
Speed-up Valve		-	Standard	Standard	Standard	Option	Option
Rotating		-	Free	Free	Free	Free	Free
Recommended Carrier Weight		lb	37,500~61,700	57,300~83,800	66,100~99,200	154,300~220,500	220,500~264,600
Optional Jaw Types		-	C, P, M	C, P, M	C, P, M	C	C
Cylinder Bore Diameter		in	Ø9.4	Ø9.8	Ø11.4	Ø13.8	Ø17.3



- Above specifications are subject to change without prior notice.
- Dimensions in () are for pin on type mounting configuration.

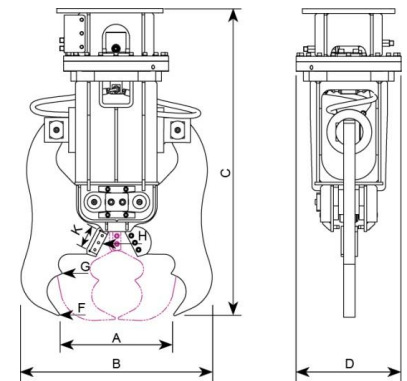
Crusher

CR series

- Lightweight design for stability of operating machine
- One cylinder system for powerful crushing and speed
- High strength and wear resistance materials for reliability
- Hydraulic rotating type uses internal gear type slewing bearing (CR040H, CR050H)

Description		units	CR010R	CR020R	CR030R	CR040H	CR050H
Weight		lb	230	400	820	930	1,060
Max Opening Width	A	in	11.0	14.2	16.9	16.9	20.5
Overall Width	B	in	22.4	27.2	30.3	30.3	33.5
Overall Length	C	in	32.3	38.4	48.4	54.3	53.7
Overall Height	D	in	10.2	11.4	13.8	18.3	18.3
Crushing Force	F	US ton	21 (@ 3,000 psi)	23 (@ 3,000 psi)	30 (@ 3,000 psi)	30 (@ 3,000 psi)	35 (@ 3,500 psi)
	G	US ton	33 (@ 3,000 psi)	34 (@ 3,000 psi)	42 (@ 3,000 psi)	42 (@ 3,000 psi)	54 (@ 3,500 psi)
Cutting Force	H	US ton	57 (@ 3,000 psi)	66 (@ 3,000 psi)	89 (@ 3,000 psi)	89 (@ 3,000 psi)	111 (@ 3,500 psi)
Cutter Length	K	in	3.0	3.9	3.9	3.9	3.9
Allowable Max. System Pressure		psi	4,100	4,100	4,100	4,100	4,400
Swing Motor Setting Pressure		psi	-	-	-	1,200	1,200
Recommended Oil Flow	Cylinder	gpm	2.6 ~ 9.2	4.0 ~ 11.9	7.9 ~ 19.8	7.9 ~ 19.8	13.2 ~ 23.8
	S / Motor	gpm	-	-	-	2.6 ~ 4.0	2.6 ~ 4.0
Rotating		-	Free	Free	Free	Hydraulic	Hydraulic
Recommended Carrier Weight		lb	1,500~4,400	3,300~6,600	5,500~8,800	6,600~11,000	9,900~17,600

- Above specifications are subject to change without prior notice.



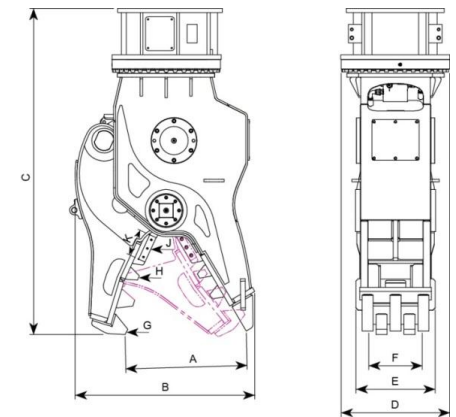
Pulverizer

PR-H series, Hydraulic Rotating

- Hydraulic rotation ensures freedom of operation
- Trunnion mounting cylinder for compact design
- High strength and wear resistance materials for reliability
- Speed-up valve for fast work

Description		units	PR050H	PR200H	PR300H
Weight		lb	1,210	4,340	6,480
Max Opening Width	A	in	20.1	30.5	41.3
Overall Width	B	in	29.9	45.1	53.0
Overall Length	C	in	53.9	80.7	93.3
Overall Height	D	in	18.3	27.4	31.9
Body Width	E	in	14.6	19.9	23.8
Jaw Width	F	in	8.3	11.8	15.0
Crushing Force	G	US ton	23 (@ 3,500 psi)	57 (@ 4,800 psi)	85 (@ 4,800 psi)
	H	US ton	40 (@ 3,500 psi)	101 (@ 4,800 psi)	156 (@ 4,800 psi)
Cutting Force	J	US ton	71 (@ 3,500 psi)	177 (@ 4,800 psi)	277 (@ 4,800 psi)
Cutter Length	K	in	3.9	6.7	7.9
Allowable Max. System Pressure		psi	4,400	5,500	5,500
Swing Motor Setting Pressure		psi	1,200	3,000	3,000
Recommended Oil Flow	Cylinder	gpm	13.2 ~ 23.8	39.6 ~ 66.0	66.0 ~ 92.5
	S / Motor	gpm	2.6 ~ 4.0	9.5 ~ 10.6	9.5 ~ 10.6
Speed-up Valve		-	Standard	Standard	Standard
Rotating		-	Hydraulic	Hydraulic	Hydraulic
Recommended Carrier Weight		lb	9,900 ~ 17,600	37,500 ~ 61,700	57,300 ~ 83,800

- Above specifications are subject to change without prior notice.



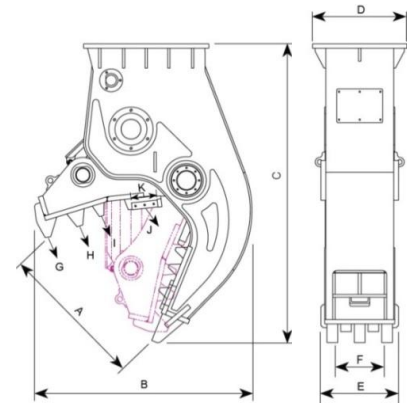
Pulverizer

PR-F series, Fixed

- Wide jaw opening for work efficient
- Trunnion mounting cylinder for compact design
- High strength and wear resistance materials for reliability
- Speed-up valve for fast work

Description		units	PR050F	PR100F	PR150F	PR200F	PR300F
Weight		lb	1,280	1,430	3,020	3,880	5,560
Max Opening Width	A	in	29.3	28.5	33.1	38.6	43.7
Overall Width	B	in	41.3	41.7	47.8	56.9	62.6
Overall Length	C	in	60.8	63.2	65.6	77.0	87.8
Overall Height	D	in	18.5	18.7	22.8	25.8	26.8
Body Width	E	in	14.6	14.6	17.7	19.9	23.8
Jaw Width	F	in	10.0	12.2	12.2	12.6	15.0
Crushing Force	G	US ton	24 (@ 3,500 psi)	28 (@ 4,100 psi)	42 (@ 4,800 psi)	53 (@ 4,800 psi)	72 (@ 4,800 psi)
	H	US ton	37 (@ 3,500 psi)	43 (@ 4,100 psi)	55 (@ 4,800 psi)	68 (@ 4,800 psi)	96 (@ 4,800 psi)
	I	US ton	-	-	69 (@ 4,800 psi)	86 (@ 4,800 psi)	125 (@ 4,800 psi)
Cutting Force	J	US ton	80 (@ 3,500 psi)	107 (@ 4,100 psi)	157 (@ 4,800 psi)	204 (@ 4,800 psi)	222 (@ 4,800 psi)
Cutter Length	K	in	3.9	3.9	6.7	6.7	7.9
Allowable Max. System Pressure		psi	3,900	4,400	5,500	5,500	5,500
Recommended Oil Flow		gpm	13.2 ~ 23.8	15.9 ~ 34.3	29.1 ~ 52.8	39.6 ~ 66	66.0 ~ 79.3
Speed-up Valve		-	-	-	Option	Option	Option
Recommended Carrier Weight		lb	9,900~17,600	15,400~26,500	26,500~39,700	37,500~61,700	57,300~83,800
Mounting type		-	P	P	B	P,B	P,B

- Above specifications are subject to change without prior notice.



Shear

MP series

- Optimization of weight, cutting force, and opening width
- High strength and wear resistance materials for reliability
- Speed-up valve for fast work
- Versatility work with 4 options (crushing / shearing / pulverizing / multi)

Description		units	MP050H-S	MP100H-S	MP150H-S	MP250H-S	MP350H-S
Weight		lb	1,370	2,050	2,690	4,540	7,610
Max Opening Width	A	in	12.2	14.8	16.9	23.6	25.0
Overall Width	B	in	39.4	46.1	43.7	55.1	62.2
Overall Length	C	in	53.7	68.5	66.5 (74)	78 (88)	91.7 (105.5)
Overall Height	D	in	18.3	22.0	23.2	27.4	31.9
Body Width	E	in			6.9	8.5	9.1
Cutting Force	F	US ton	43 (@ 3,500 psi)	61 (@ 4,800 psi)	75 (@ 4,800 psi)	105 (@ 4,800 psi)	145 (@ 4,800 psi)
	G	US ton	86 (@ 3,500 psi)	118 (@ 4,800 psi)	147 (@ 4,800 psi)	194 (@ 4,800 psi)	284 (@ 4,800 psi)
	H	US ton	166 (@ 3,500 psi)	242 (@ 4,800 psi)	270 (@ 4,800 psi)	375 (@ 4,800 psi)	563 (@ 4,800 psi)
Cutter Length	K	in	3/5.9/2.1/2.6	3.0	3.9	3.9	4.7
Allowable Max. System Pressure		psi	4,400	4,800	5,100	5,500	5,500
Swing Motor Setting Pressure		psi	1,200	1,200	3,000	3,000	3,000
Recommended Oil Flow	Cylinder	gpm	13.2 ~ 23.8	15.9 ~ 29.1	21.1 ~ 47.6	39.6 ~ 66.0	66.0 ~ 92.5
	S / Motor	gpm	2.6 ~ 4.0	2.6 ~ 4.0	9.5 ~ 10.6	9.5 ~ 10.6	9.5 ~ 10.6
Speed-up Valve		-	Standard	Standard	Standard	Standard	Standard
Rotating		-	Hydraulic	Hydraulic	Hydraulic	Hydraulic	Hydraulic
Recommended Carrier Weight		lb	9,900~17,600	15,400~26,500	26,500~39,700	37,500~61,700	66,100~99,200
Optional Jaw Types		-	C, S	C, S	C, S, P, M	C, S, P, M	C, S, P, M
Cylinder Bore Diameter		in	Ø6.5	Ø7.1	Ø7.9	Ø9.4	Ø11.4

- Above specifications are subject to change without prior notice.
- Dimensions in () are for pin on type mounting configuration.



Option Jaw



Crusher (C)



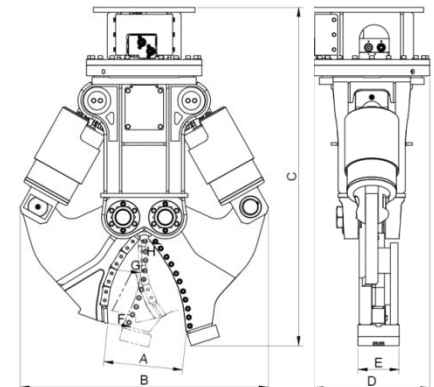
Shear (S)



Pulverizer (P)



Mult (M)



Shear

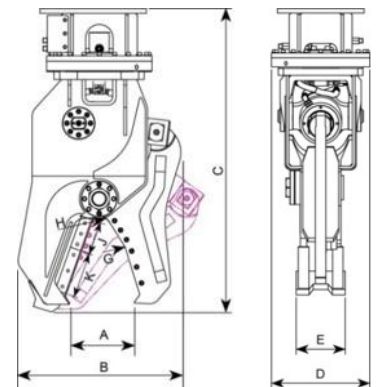
SH series

Sheet 1/2

- Lightweight design for stability of operating machine
- Trunnion mounting cylinder for compact design
- Simple gap adjustment system for maintenance in the field
- High strength and wear resistance materials for reliability
- Internal gear type slewing bearing application (except SH025R)

Description		units	SH025R	SH030R	SH030H	SH040R	SH040H
Weight		lb	460	640	740	880	990
Max Opening Width	A	in	8.1	9.1	9.1	10.6	10.6
Overall Width	B	in	20.1	22.2	22.2	28.0	28.0
Overall Length	C	in	37.8	44.5	47.4	48.8	55.3
Overall Height	D	in	12.6	13.8	14.2	15.9	18.3
Jaw Width	E	in	5.3	5.7	5.7	5.7	5.7
Cutting Force	G	US ton	50 (@ 3,000 psi)	48 (@ 3,000 psi)	48 (@ 3,000 psi)	62 (@ 3,000 psi)	62 (@ 3,000 psi)
	H	US ton	112 (@ 3,000 psi)	121 (@ 3,000 psi)	119 (@ 3,000 psi)	80 (@ 3,000 psi)	80 (@ 3,000 psi)
	I	US ton	-	-	-	185 (@ 3,000 psi)	185 (@ 3,000 psi)
Cutter Length	J	in	3.9	4.9	4.9	4.9	4.9
	K	in	4.9	5.9	5.9	-	-
Allowable Max. System Pressure		psi	4,100	4,100	4,100	4,100	4,100
Swing Motor Setting Pressure		psi	-	-	1,200	-	1,200
Recommended Oil Flow	Cylinder	gpm	4.0 ~ 9.2	7.9 ~ 15.9	7.9 ~ 19.8	9.2 ~ 23.8	9.2 ~ 23.8
	S / Motor	gpm	-	-	2.6 ~ 4.0	-	2.6 ~ 4.0
Rotating		-	Free	Free	Hydraulic	Free	Hydraulic
Recommended Carrier Weight		lb	3,300~6,600	5,500~8,800	5,500~8,800	6,600~11,000	6,600~11,000

- Above specifications are subject to change without prior notice.



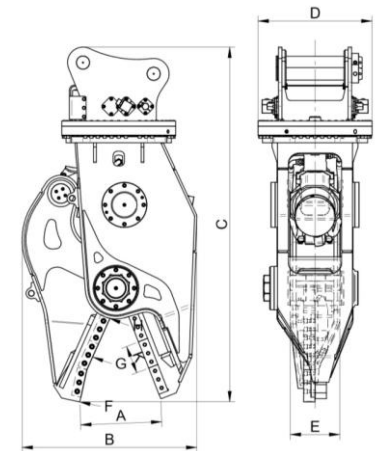
Shear

SH series

Sheet 2/2

- Lightweight design for stability of operating machine
- Trunnion mounting cylinder for compact design
- Simple gap adjustment system for maintenance in the field
- High strength and wear resistance materials for reliability

Description		units	SH050H	SH300H
Weight		lb	1,120	6,390
Max Opening Width	A	in	11.4	22.8
Overall Width	B	in	28.3	49.0
Overall Length	C	in	53.3	85.6 (99.4)
Overall Height	D	in	18.3	31.9
Jaw Width	E	in	7.1	13.8
Cutting Force	G	US ton	77 (@ 3,500 psi)	118 (@ 4,800 psi)
	H	US ton	187 (@ 3,500 psi)	162 (@ 4,800 psi)
	I	US ton	-	454 (@ 4,800 psi)
Cutter Length	J	in	5.9	
	K	in	7.9	7.9
Allowable Max. System Pressure		psi	4,400	5,500
Swing Motor Setting Pressure		psi	1,200	3,000
Recommended Oil Flow	Cylinder	gpm	13.2 ~ 23.8	66.0 ~ 92.5
	S / Motor	gpm	2.6 ~ 4.0	9.5 ~ 10.6
Speed-up Valve		-	-	Standard
Rotating		-	Hydraulic	Hydraulic
Recommended Carrier Weight		lb	9,900~17,600	57,300~83,800
Cylinder Bore Diameter		in	Ø6.5	Ø9.4



SH300H

- Above specifications are subject to change without prior notice.

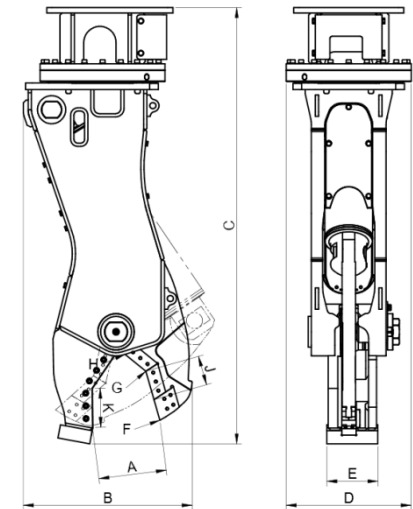
Shear

SS series

- Piercing and stick type cutters capable of cutting materials larger than the opening width
- Trunnion mounting cylinder for compact design
- Simple gap adjustment system for maintenance in the field
- High strength and wear resistance materials for reliability

Description		units	SS050H
Weight		lb	1,080
Max Opening Width	A	in	9.8
Overall Width	B	in	24.8
Overall Length	C	in	64.2
Overall Height	D	in	18.3
Body Width	E	in	7.5
Cutting Force	F	US ton	38 (@ 3,500 psi)
	G	US ton	72 (@ 3,500 psi)
	H	US ton	156 (@ 3,500 psi)
Cutter Length	J	in	4.3
	K	in	5.7
Allowable Max. System Pressure		psi	4,400
Swing Motor Setting Pressure		psi	1,200
Recommended Oil Flow	Cylinder	gpm	13.2 ~ 23.8
	S / Motor	gpm	2.6 ~ 4.0
Rotating		-	Hydraulic
Recommended Carrier Weight		lb	9,900~17,600

- Above specifications are subject to change without prior notice.



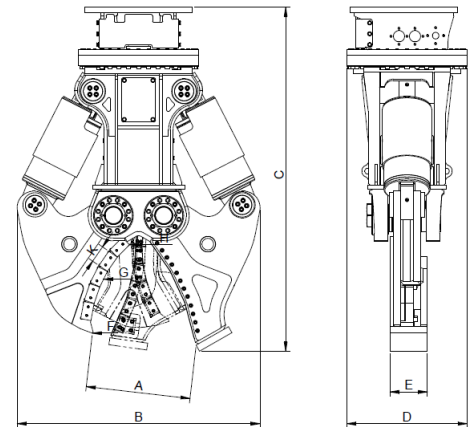
Shear

SK series

- Application of linkage system to maximize cutting ability
- High strength and wear resistance materials for reliability
- Speed-up valve for fast work
- Simple gap adjustment system for maintenance in the field

Description		units	SK300H	SK350H	SK500H
Weight		lb	6,390	7,610	12,130
Max Opening Width	A	in	23.2	23.4	30.3
Overall Width	B	in	62.0	66.1	72.8
Overall Length	C	in	87.8 (101.6)	92.5 (106.3)	108.3 (126)
Overall Height	D	in	31.9	31.9	38.6
Jaw Width	E	in	9.1	10.2	12.6
Cutting Force	F	US ton	119 (@ 4,800 psi)	155 (@ 4,800 psi)	236 (@ 4,800 psi)
	G	US ton	231 (@ 4,800 psi)	309 (@ 4,800 psi)	421 (@ 4,800 psi)
	H	US ton	492 (@ 4,800 psi)	631 (@ 4,800 psi)	809 (@ 4,800 psi)
Cutter Length	K	in	4.7	5.3	5.9
Allowable Max. System Pressure		psi	5,500	5,500	5,500
Swing Motor Setting Pressure		psi	3,000	3,000	3,000
Recommended Oil Flow	Cylinder	gpm	52.8 ~ 79.3	66.0 ~ 92.5	79.3 ~ 118.9
	S / Motor	gpm	9.5 ~ 10.6	9.5 ~ 10.6	19.0 ~ 21.1
Speed-up Valve		-	Standard	Standard	Standard
Rotating		-	Hydraulic	Hydraulic	Hydraulic
Recommended Carrier Weight		lb	57,300~83,800	66,100~99,200	83,800~121,300
Optional Jaw Types		-	S	S	S
Cylinder Bore Diameter		in	Ø9.8	Ø11.4	Ø13.4

- Above specifications are subject to change without prior notice.
- Dimensions in () are for pin on type mounting configuration.



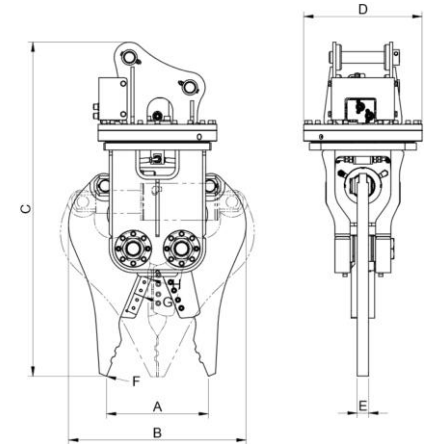
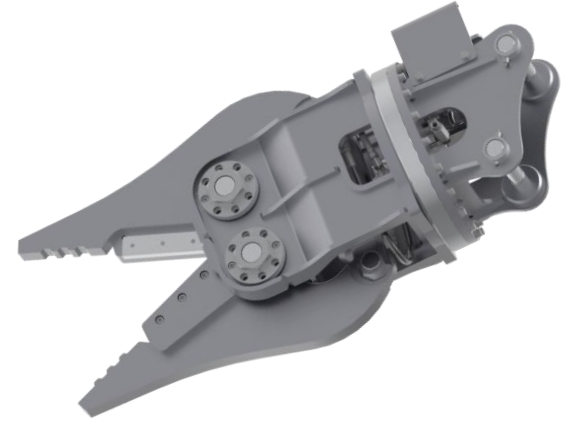
Nibbler

HN series

- Special cutter for dismantling automobiles
- Removing and classifying various parts during dismantling
- 1-cylinder type, lightweight, quick operation and powerful cutting power
- High strength and wear resistance materials for reliability

Description		units	HN050H
Weight		lb	790
Max Opening Width	A	in	16.7
Overall Width	B	in	26.4
Overall Length	C	in	53.0
Overall Height	D	in	18.3
Jaw Width	E	in	1.8 (3.7)
Crushing Force	F	US ton	15 (@ 3,500 psi)
Cutting Force	G	US ton	37 (@ 3,500 psi)
	H	US ton	58 (@ 3,500 psi)
Cutter Length	K	in	7.9
Allowable Max. System Pressure		psi	4,400
Swing Motor Setting Pressure		psi	1,200
Recommended Oil Flow	Cylinder	gpm	7.9 ~ 15.9
	S / Motor	gpm	2.6 ~ 4.0
Rotating		-	Hydraulic
Recommended Carrier Weight		lb	9,900~17,600

- Above specifications are subject to change without prior notice.



Grab

TF series

- Lightweight design for stability of operating machine
- 4-bar linkage system for fast motion and wide opening
- High strength and wear resistance materials for reliability

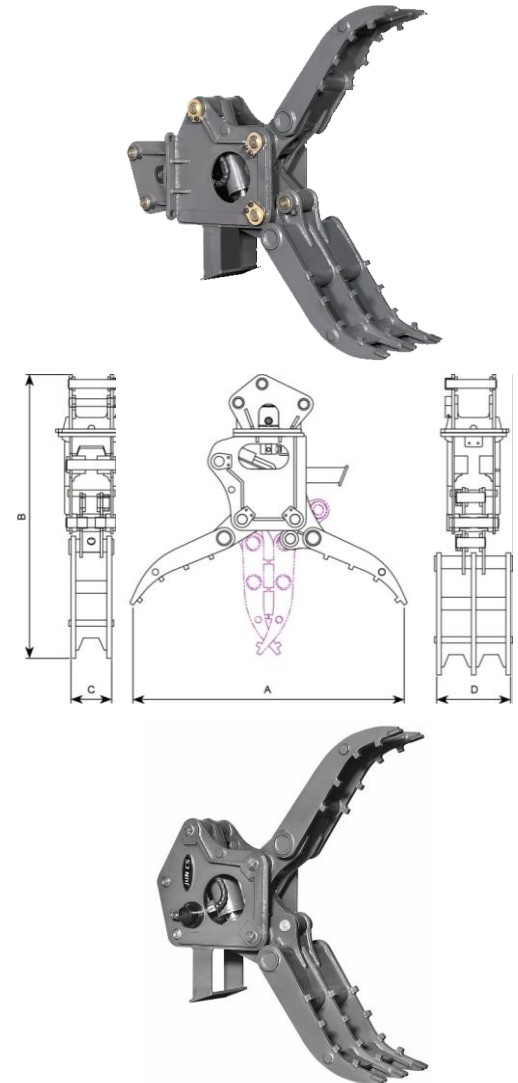
Rotating

Description		units	TF010R	TF020R	TF030R	TF030H
Weight		lb	180	320	460	500
Max Opening Width	A	in	33.9	42.5	49.2	42.5
Overall Length	B	in	37.0	44.5	45.3	42.1
Upper jaw Width	C	in	4.9	6.1	8.1	6.1
Lower jaw Width	D	in	9.4	11.6	14.6	11.6
Allowable Max. System Pressure		psi	4,100	4,100	4,100	4,100
Swing Motor Setting Pressure		psi	-	-	-	1,200
Recommended Oil Flow	Cylinder	gpm	4.0 ~ 9.2	5.3 ~ 11.9	7.9 ~ 19.8	7.9 ~ 19.8
	S / Motor	gpm	-	-	-	2.6 ~ 4.0
Rotating		-	Free	Free	Free	Hydraulic
Recommended Carrier Weight		lb	1,500~4,400	3,300~6,600	5,500~11,000	5,500~11,000

Fixed

Description		units	TF010F	TF020F	TF030F	TF050F
Weight		lb	130	240	350	660
Max Opening Width	A	in	33.9	42.5	49.2	53.5
Overall Length	B	in	29.5	37.4	43.5	49.8
Upper jaw Width	C	in	4.9	6.3	8.1	9.1
Lower jaw Width	D	in	9.4	11.6	14.6	15.4
Allowable Max. System Pressure		psi	4,100	4,100	4,100	4,400
Recommended Oil Flow (Cylinder)		gpm	4.0 ~ 9.2	5.3 ~ 11.9	7.9 ~ 19.8	13.2 ~ 23.8
Recommended Carrier Weight		lb	1,500~4,400	3,300~6,600	5,500~11,000	9,900~17,600

- Above specifications are subject to change without prior notice.



Grab

MG series

- Hydraulic rotation ensures freedom of operation
- Internal gear type slewing bearing application
- 4-bar linkage system ensures quick operation and wide opening range
- High strength and wear resistance materials for reliability
- Check valve for safety
- Various jaw options available according to the characteristics of the workplace
(Stone handling, Scrap handling, Sorting)

Description		units	MG150H	MG200H	MG300H
Weight		lb	1,870	3,000	4,630
Max Opening Width	A	in	56.7	67.7	73.4
Overall Length	B	in	73.2	87.0	99.8
	C	in	81.5	97.0	107.9
Jaw Width	D	in	25.6	31.5	39.4
	E	in	25.6	31.5	39.4
Jaw Length	F	in	38.9	46.7	51.6
Allowable Max. System Pressure		psi	5,500	5,500	5,500
Swing Motor Setting Pressure		psi	3,000	3,000	3,000
Recommended Oil Flow	Cylinder	gpm	29.1 ~ 52.8	39.6 ~ 66.0	66.0 ~ 92.5
	S / Motor	gpm	9.5 ~ 10.6	9.5 ~ 10.6	9.5 ~ 10.6
Rotating		-	Hydraulic	Hydraulic	Hydraulic
Recommended Carrier Weight		lb	26,500~39,700	37,500~61,700	57,300~83,800

- Above specifications are subject to change without prior notice.
- Optional Jaws are available to order.



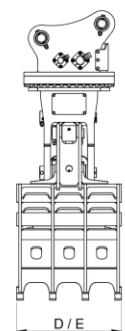
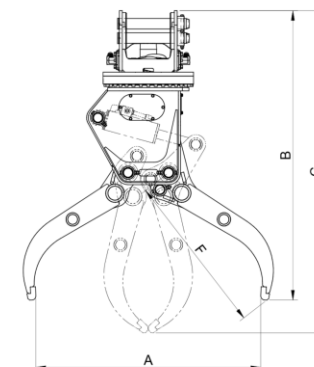
STD jaw
Scrap handling jaw



(for Ex.)
Stone handling jaw



(for Ex.)
Sorting jaw



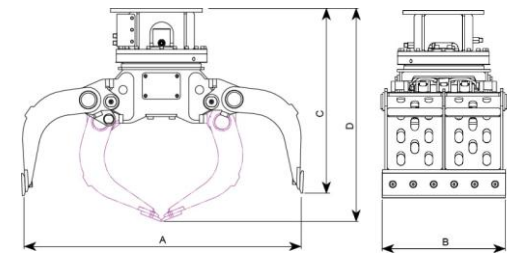
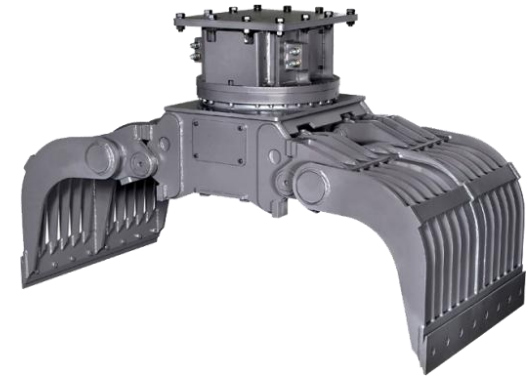
Grab

SG series

- Hydraulic rotation ensures freedom of operation
- Powerful crushing force with 2-cylinder system
- Optimal linkage system for sorting and crushing
- High strength and wear resistance materials for reliability
- Jaw options available according to user requirements

Description		units	SG050H	SG100H	SG150H	SG200H
Weight		lb	980	1,060	1,760	3,000
Max Opening Width	A	in	56.7	56.7	70.9	83.3
Overall Width	B	in	24.4	28.3	35.8	42.1
Overall Length	C	in	36.6	36.6	43.3	51.6
	D	in	42.7	42.7	50.8	60.0
Crushing Force		US ton	3	3	5	6
Allowable Max. System Pressure		psi	4,400	4,400	5,500	5,500
Swing Motor Setting Pressure		psi	1,200	1,200	3,000	3,000
Recommended Oil Flow	Cylinder	gpm	13.2 ~ 23.8	13.2 ~ 23.8	29.1 ~ 52.8	39.6 ~ 66
	S / Motor	gpm	2.6 ~ 4.0	2.6 ~ 4.0	2.6 ~ 4.0	9.5 ~ 10.6
Rotating		-	Hydraulic	Hydraulic	Hydraulic	Hydraulic
Recommended Carrier Weight		lb	9,900~17,600	15,400~26,500	26,500~39,700	37,500~61,700

- Above specifications are subject to change without prior notice.
- Optional Jaws are available to order.



Grab

ST series

- Hydraulic rotation ensures freedom of operation
- Optimal linkage system and jaw geometry for rock handling
- Check valve for safety
- Changeable teeth

Description		units	ST050H
Weight		lb	800
Max Opening Width	A	in	50.8
Overall Length	B	in	43.9
	C	in	49.4
Jaw Width	D	in	16.5
	E	in	9.8
Jaw Length	F	in	33.5
Allowable Max. System Pressure		psi	3,500
Swing Motor Setting Pressure		psi	1,200
Recommended Oil Flow	Cylinder	gpm	13.2 ~ 23.8
	S / Motor	gpm	2.6 ~ 4.0
Rotating		-	Hydraulic
Recommended Carrier Weight		lb	9,900~17,600

- Above specifications are subject to change without prior notice.

